



# RBQM Essentials Series

---

By MyRBQM® Academy



# Embrace a Quality by Design Culture

Because compliance isn't optional



# About MyRBQM® Academy

Targeted education helps clinical research teams embrace the implementation process and contribute to its success, ensuring your organization's RBQM strategy has the components it needs to meet regulatory expectations.

Established in 2019, Cyntegrity's MyRBQM Academy unites first-level online education, comprehensive instructor-led training, and practical case study workshops.

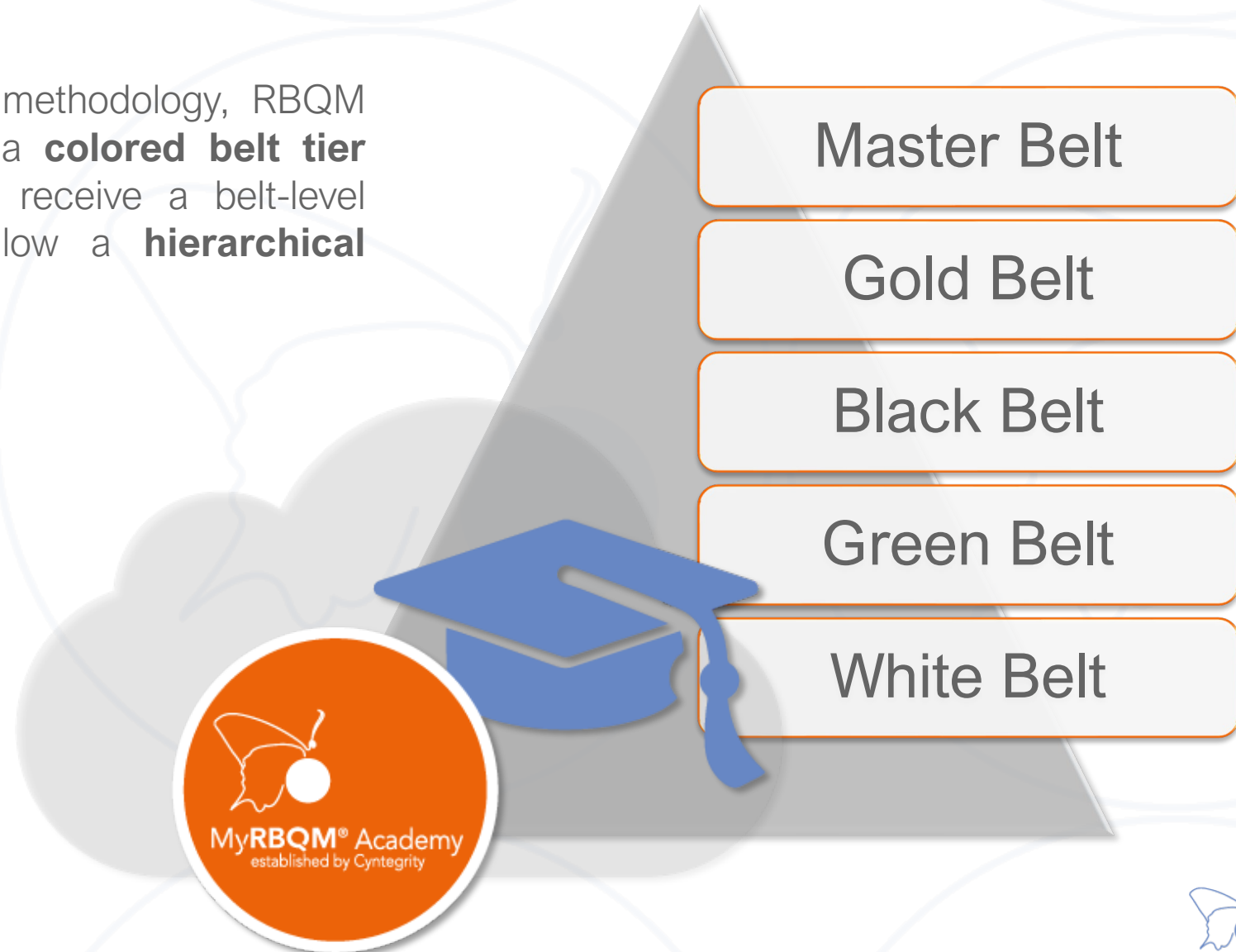
RBQM Essentials is a series of courses that goes beyond the regulatory basics and takes you step-by-step through the key components you need to have in your risk-based quality management strategy. It gives you change management strategies, team effectiveness tools, and downloadable implementation tools you can use immediately.

The popular White Belt e-course provides a sound knowledge of ICH E6(r2) compliant risk-based quality management and is a foundation for successive tiers within the RBQM Essentials program.

Today, over 500 MyRBQM Academy graduates represent more than 70 different CROs, sponsor companies, academic institutions, and consultancy firms.

# RBQM Essentials Series

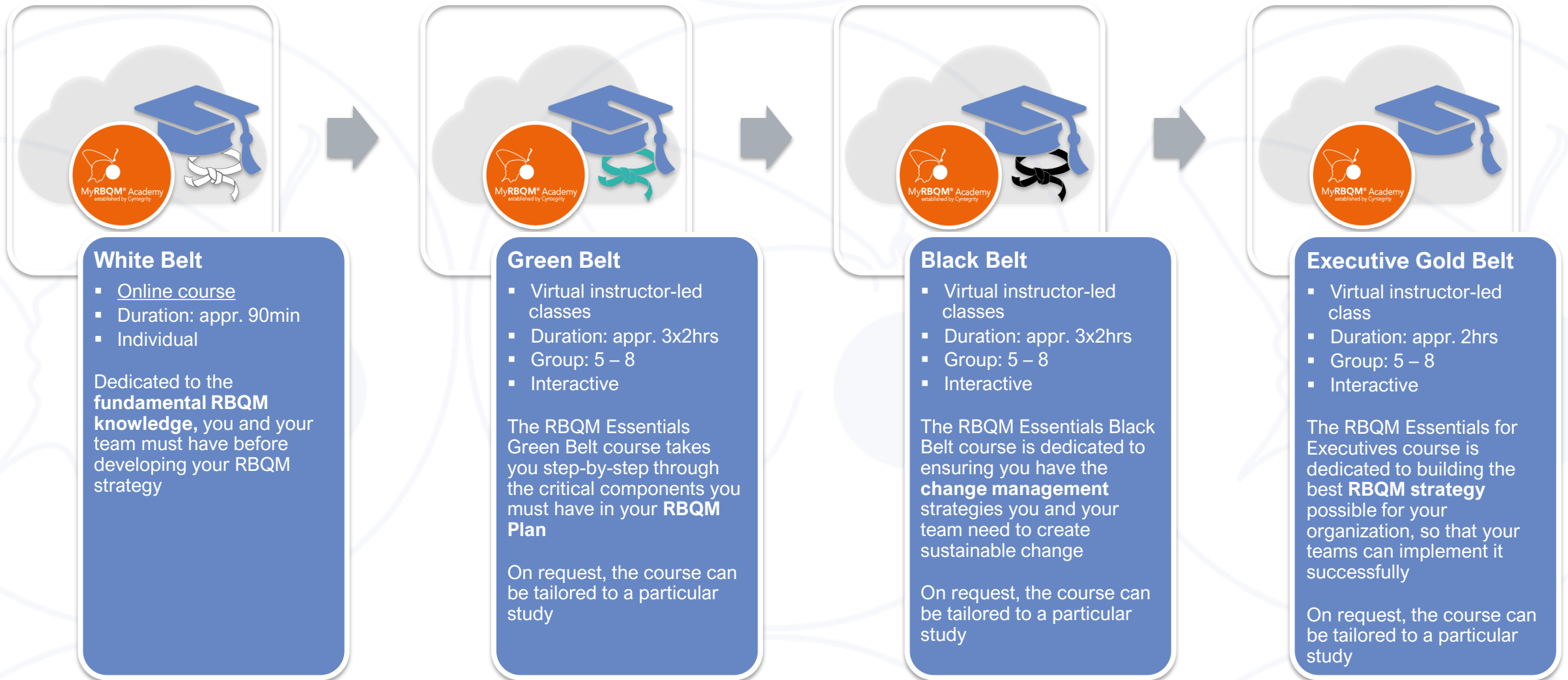
Similar to the Lean Six Sigma methodology, RBQM Essentials provides the use of a **colored belt tier system** for its certification. To receive a belt-level certification, students must follow a **hierarchical process**.



# For Whom is it Meant

- **White and Green Belt:** Clinical Project Management staff, Clinical Operations staff, Data Managers, Quality Management staff, Statisticians, Pharmacovigilance staff, CRAs/Monitors and all other Clinical Research Professionals
  - **Black Belt:** Selected staff from the group that passed the Green Belt course and/or those who will be in charge of rolling out RBQM in the/an organization
  - **Master Belt:** Selected staff from the group that passed all four preceding Belt courses and who will be training in-house RBQM Essentials Belt students
- ⇒ Prior experience in and/or knowledge of ICH-GCP and Clinical Research is recommended

# RBQM Essentials Series



# RBQM Essentials Pricing

	White Belt	Green Belt		Black Belt		Executive Belt	
FORMAT							
type	standard	standard case study	Tailored to client specific case study; training materials will be customized based on the study protocol provided.	standard case study	Tailored to client specific case study; training materials will be customized based on the study protocol provided.	standard case study	Tailored to client specific case study; training materials will be customized based on the study protocol provided.
format	eCourse	virtual instructor-led	virtual instructor-led	virtual instructor-led	virtual instructor-led	virtual instructor-led	virtual instructor-led
duration	90min	3x 2hr sessions	3x 2hr sessions	3x 2hr sessions	3x 2hr sessions	2hr session	2hr session
group size	individual	group: 5 - 8	group: 5 - 8	group: 5 - 8	group: 5 - 8	group: 5 - 8	group: 5 - 8
PRICING							
USD price p/p	\$ 190	\$ 660	\$ 1,335	\$ 875	\$ 1,605	\$ 460	\$ 760
EUR price p/p	€ 169	€ 590	€ 1,185	€ 780	€ 1,425	€ 410	€ 675
PACKAGE DEALS							
8+ group discount	n.a.	7.5% off group	7.5% off group	7.5% off group	7.5% off group	7.5% off group	7.5% off group
MyRBQM® Portal	FOC with Pro (5 seats and up) and Enterprise	20% off	20% off	20% off	20% off	20% off	20% off



# Lead Instructors

## Dr. Johann Proeve


Chief Scientific Officer – Cyntegrity

## Jo Burmester

Clin. Research Specialist – MyRBQM Academy

## Linda Bunschoten

Chief Marketing Officer – Cyntegrity




**Dr Johann Proeve**  
CHIEF SCIENTIFIC OFFICER

Johann Proeve has more than 35 years of experience as a bio-pharmaceutical industry expert mostly in the former international role of Head of Global Data Management at Bayer AG.

Johann is a highly sought-after, motivational speaker on topics related to RBQM and Clinical Data Management at conferences such as DIA, PCT, PharmaForum and SCOPE.

Johann holds a PhD in Zoology/Animal Biology, and he currently lectures at the University of Essen Duisburg (MSc in Pharmaceutical Medicine program).



**Jo Burmester**  
MyRBQM® ACADEMY TRAINER

Jo Burmester began her career in clinical research as a CRA in 1987. Jo has international experience in the pharma industry (Glaxo, Lederle and Wellcome) and the CRO world (ClinTrials Research and Quintiles), covering both ICH and FDA requirements.

For 14 years Jo was a founding director of PharmaSchool, a specialist training company, where she worked with Pharma and Biotech companies, CROs, Hospitals, Academic Institutions and Medical Charities.

Jo is a pharmacology graduate. She also holds a Certificate in Training and Development from the CIPD, and she was a Module Leader on the Clinical Research MSc programme run at Liverpool John Moores University.



**Linda Bunschoten**  
CHIEF MARKETING OFFICER

Linda brings a broad range of international industry experience. In her 25+ year career in the healthcare industry – VIASYS Healthcare, Cardinal Health, Carefusion – she has supported clients, key opinion leaders, direct operations and distributors representing over 100 countries to achieve their growth goals.

Linda's chief thinking expertise includes translating insight into strategy and ensure that cross departmental activities contribute to the overall business goals and meet the industry's high quality expectations.

Besides her former studies biology, marketing, and organization management, Linda is also a certified Pulmonary Function Technologist and a Lean Six-Sigma green belt.



Over 75 years of combined experience



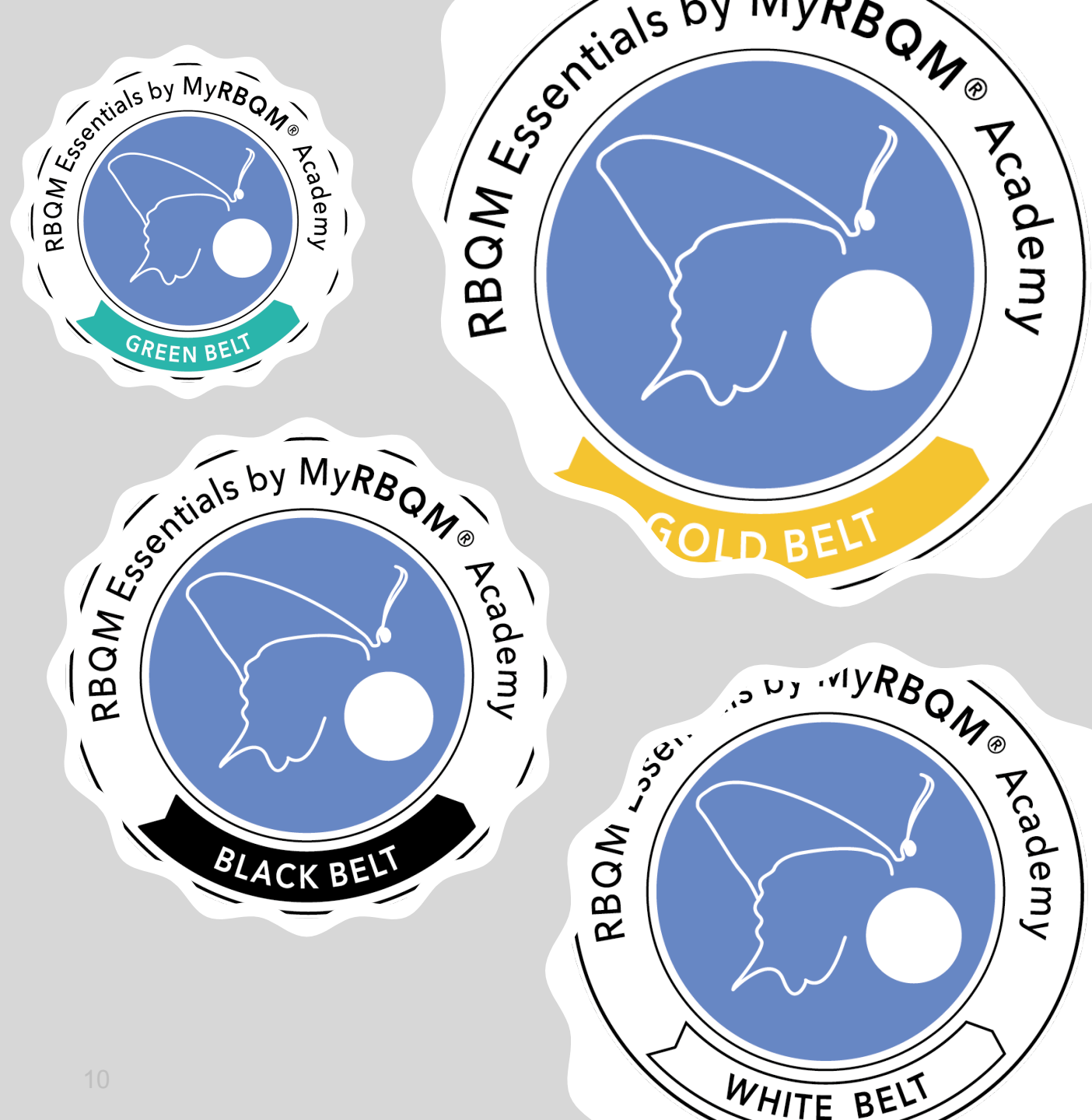
# Some Things Last Longer

MyRBQM Academy Alumni



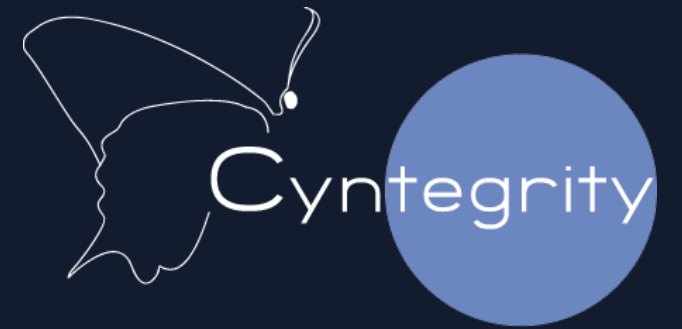
# MyRBQM® Academy Alumni Community

- MyRBQM Academy cultivates and maintains close, trust-based relationships and friendships with its alumni.
- The academy provides **exclusive, alumni-only access** to tool kits and organizes an annual **alumni-only event**, regular seminars and forums that act as best-practices communication platforms.
- It's a great place to network with peers and discuss matters of common concern as well as to post your own case studies, for example, that might be of interest to your industry peers.





**MyRBQM® Academy Alumni work for...**



## Cyntegrity Germany GmbH

### *Headquarters*

Altenhöferallee 3  
D-60438 Frankfurt am Main  
o. +49 (0)6192-470-113-50

### *Office USA*

220 Juana Avenue  
San Leandro, CA 94577  
o. +1 888.812.RBQM

### **Contact Us**

[academy@cyntegrity.com](mailto:academy@cyntegrity.com)

